



ES-4

15 W. POWER AMPLIFIER.

The ES-4 module is a stereo power stage with 15 W. RMS at 4 Ω as maximum power per channel. It could be connected to a mixer's output, auxiliary inputs, previous amplifier. It includes connection terminals, protection against polarity inversion as well as protection against short-circuits at outputs.

Because all the information indicated in this manual instruction, you had to read it.

TECHNICAL CHARACTERISTICS.

Voltage	24 V. D.C. (12-35V).
Minimum Consumption	100 mA.
Maximum Consumption	1 A.
Input Sensitivity	300 mV.
Maximum Signal Input	1 V.
Output Impedance	4-8 Ω .
Frequencies Margins	20-18.000 Hz.
Distorsion at 5w.	1 %.
R.M.S Power	15 W.
Musical Power	27 W.

OPERATING.

POWER SUPPLY. The ES-4 module had to be supplied between 12 to 35 V. D.C. Power supply, perfectly stabilised. Then, we recommend you our FE-7 module which has been specially design for this circuit needs. Connect the positive terminal of the Power Supply to the positive pin indicated in the drawing. Then, do the same operation with the negative terminal. **Verify that the assembly has been well done.**

And then, you could activate the switch supplying the module. To obtain a correct module's operating, we suggest you to isolate the module against mains parasites. Therefore, you have to place a filter between the 230 V AC transformer's input and the plug. See the paragraph "How to install a filter".

OPERATING. Seeing the General Wiring Map, when the connection of the power supply are done, you have to install a loudspeaker to the indicated terminal. The loudspeaker have to be a quality loudspeaker and offer a power of 15 W. as minimum but we suggest you to use a superior one (25 W).

SIGNAL INPUT. The input signal could be supplied by auxiliary devices, mixers, etc... (inferior than 700 mV). Connect it to the input terminals indicated in the drawing. To do this, the distance between power stage and its sound source have to be as short as possible and the used cable have to be shielded.

VOLUME CONTROL. To adjust the input signal level of the power stage to consequently change the volume, you have to install a 47 KW logarithmic potentiometer. Use a shielded cable for its assembly. See General Wiring Map.

INSTALLATION. Install the power stage into a metallic enclosure. This last must have enough to place the module and its corresponding power supply. More over this enclosure have to have a ventilation grille to dissipate the heat produced during its operating.

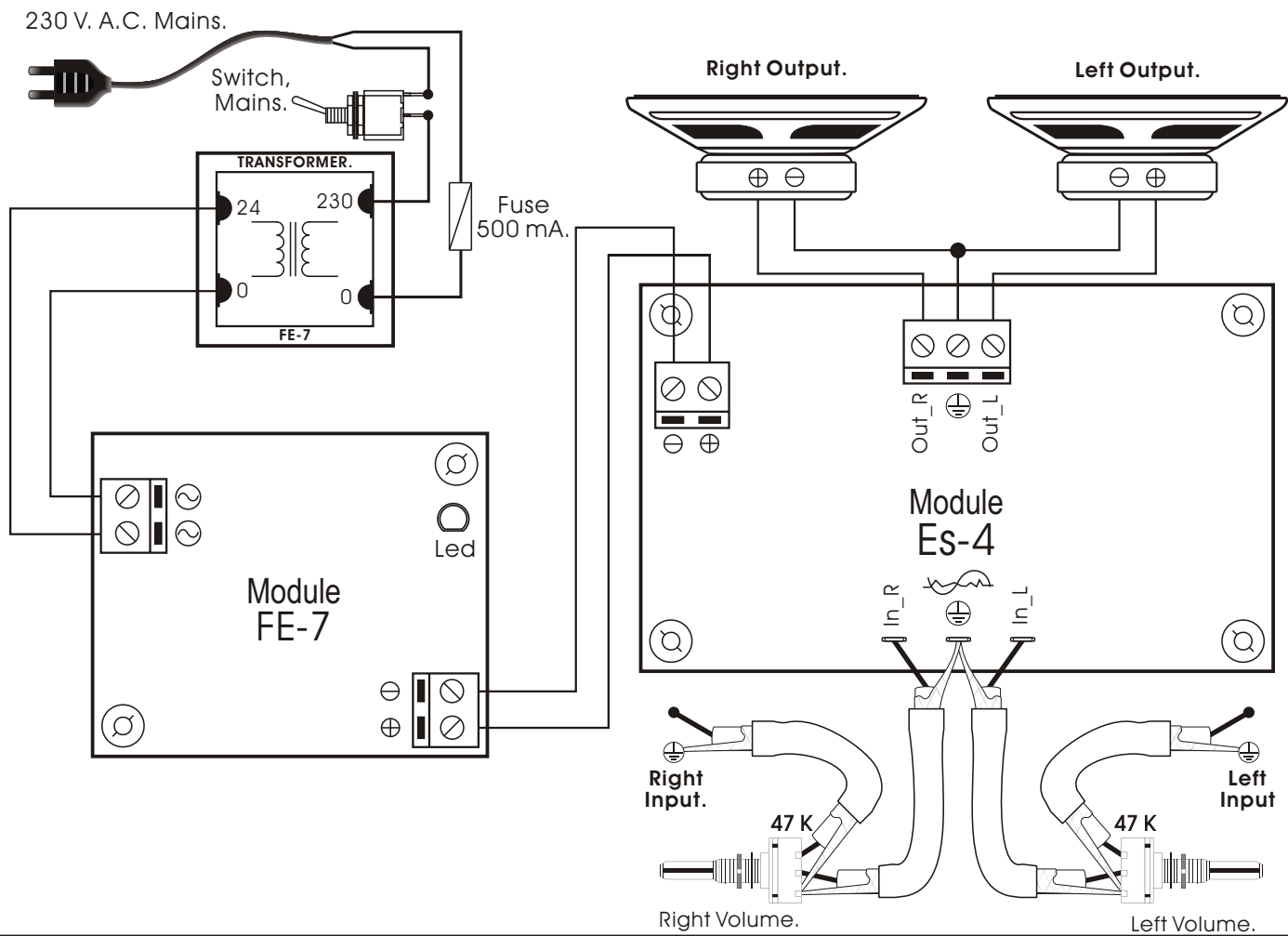


POWER AUDIO AMPLIFIERS.

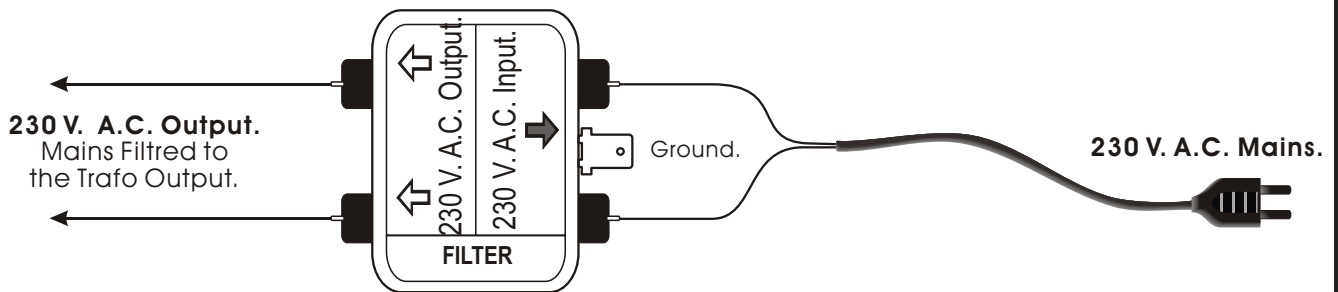
Ref. Full9708_Ang.

ES-4

GENERAL WIRING MAP.



HOW TO INSTALL A FILTER.



TECHNICAL SUPPORT AND INFORMATION.

For any questions or more information:

By Fax. (24h.) +34.3. 432.29.95

By Mail: C/ Quetzal, 17-21, Entlo. 2º (08014) BARCELONA - SPAIN.

By E-Mail: cebek@sakma.es

Keep you invoice. For any repairing could you send this with module. Else, the module will lost the warranty.

All the module's CEBEK have **3 years of total warranty** in the technical repairing, and spares from the date of buy.

CEBEK is trade make of FADISEL S.L. more than 300 module's are available in stock for any purpose **request our CATALOGUE**, or visit our Web.

[Http://www.sakma.com/CEBEK](http://www.sakma.com/CEBEK)

**MORE 300
MODULES.**

WARRANTY

**3
YEARS**