

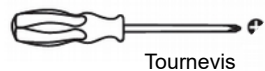


KIT GÉNÉRATEUR D'ÉNERGIE ÉOLIENNE C-0209

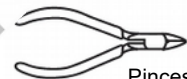
Une façon amusante d'apprendre à convertir l'énergie éolienne en une forme d'énergie utile, ainsi qu'à utiliser des éoliennes pour alimenter les lumières LED et déplacer les pédales du cycliste.

Plus le vent est fort, plus le pilote ECO roule vite et plus la LED est lumineuse.

Outils requis

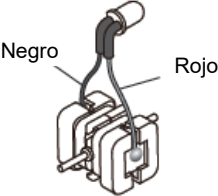






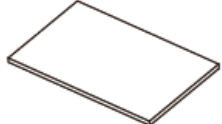



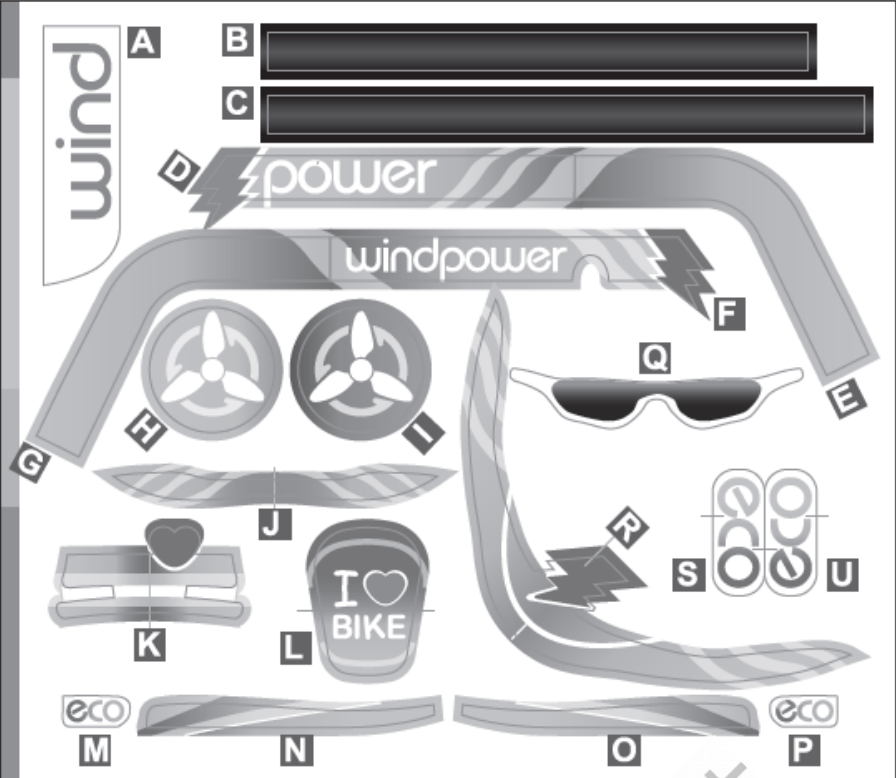
Tournevis



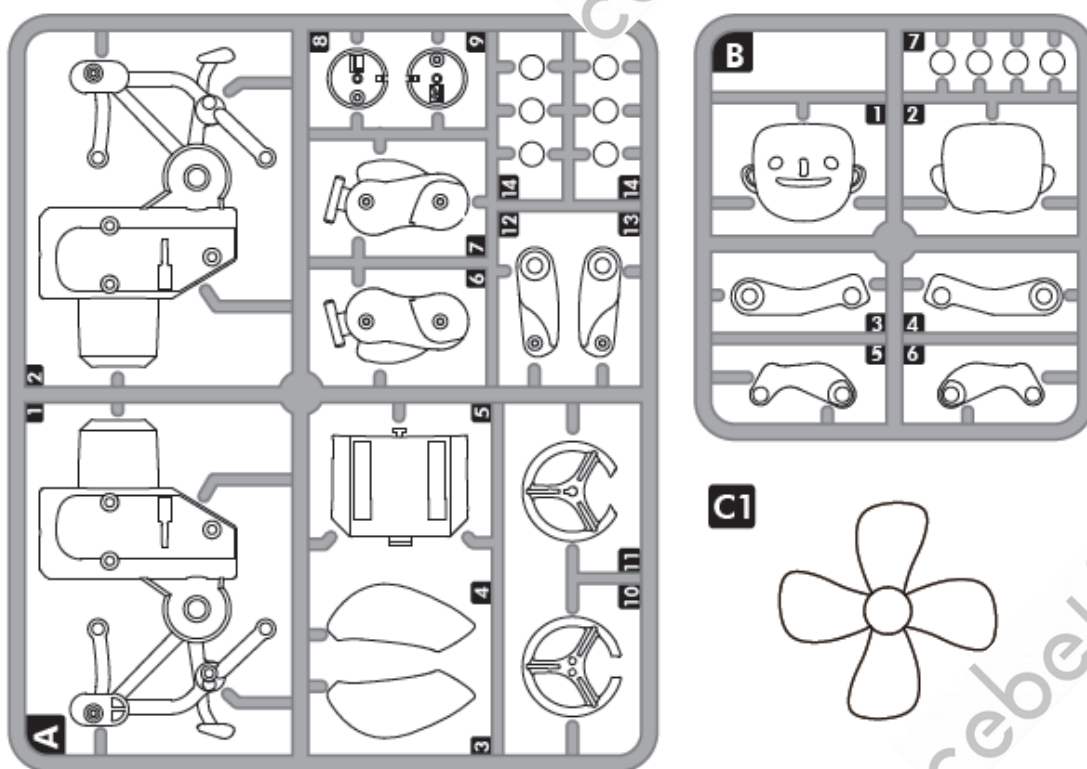
Pincès

Liste des pièces requises

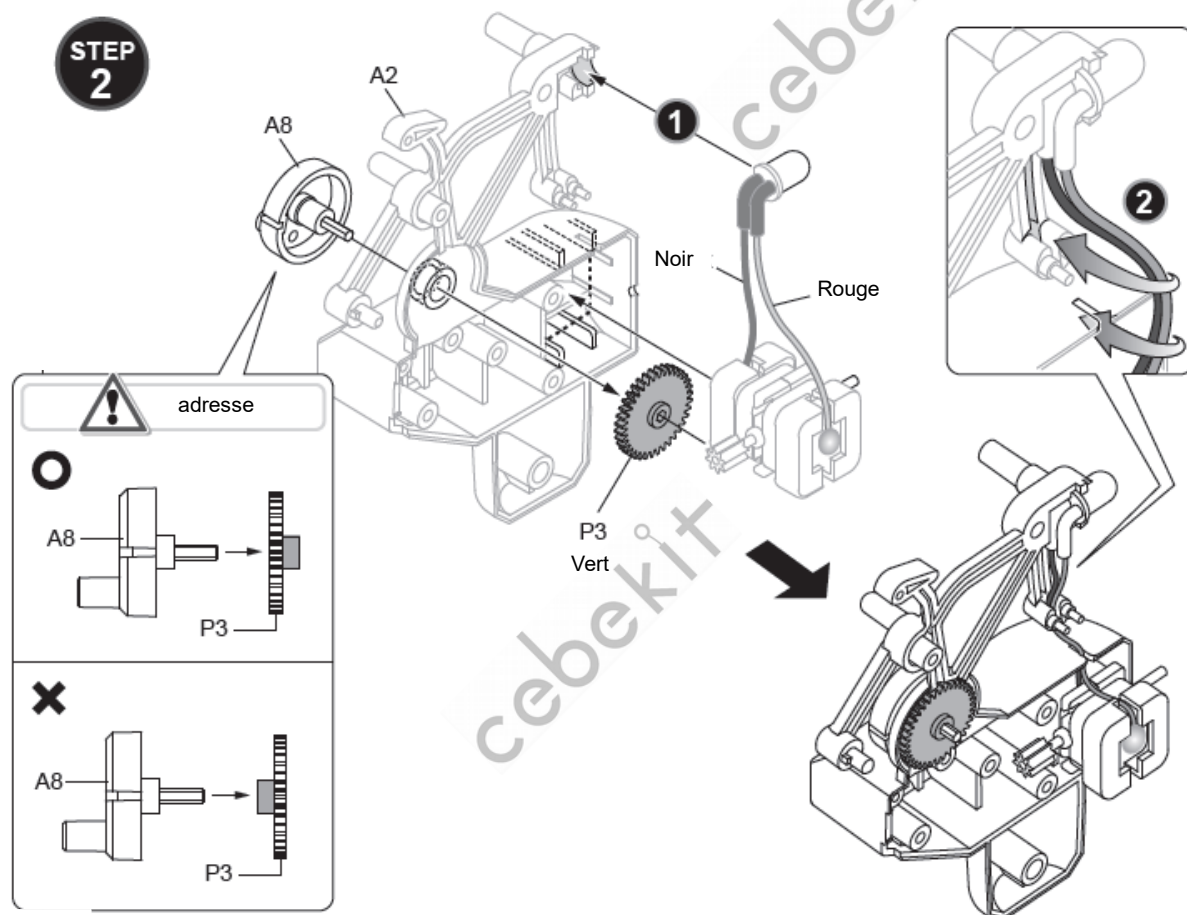
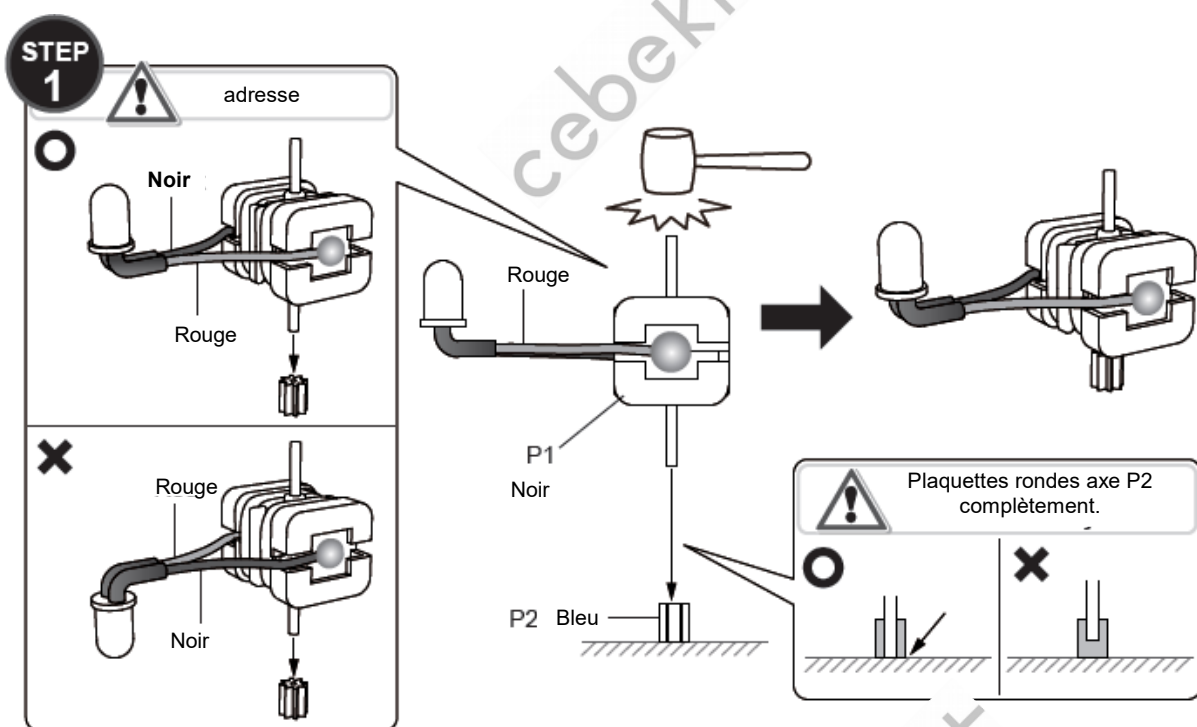
P1 Générateur avec LED	P2 Gear (Bleu)	P3 Gear (vert)
 <div> <div>Negro</div> <div>Rojo</div> <div>QTY</div> <div>1</div> </div>	 <div> <div>QTY</div> <div>1</div> </div>	 <div> <div>QTY</div> <div>1</div> </div>
P4 Gear (Jaune)	P5 Gear (Rouge)	P6 les arbres ronds
 <div> <div>QTY</div> <div>1</div> </div>	 <div> <div>QTY</div> <div>1</div> </div>	 <div> <div>QTY</div> <div>2</div> </div>
P7 Vis	P8 Coussinet en caoutchouc	P9 Joints de câbles
 <div> <div>QTY</div> <div>4</div> </div>	 <div> <div>QTY</div> <div>1</div> </div>	 <div> <div>QTY</div> <div>4</div> </div>

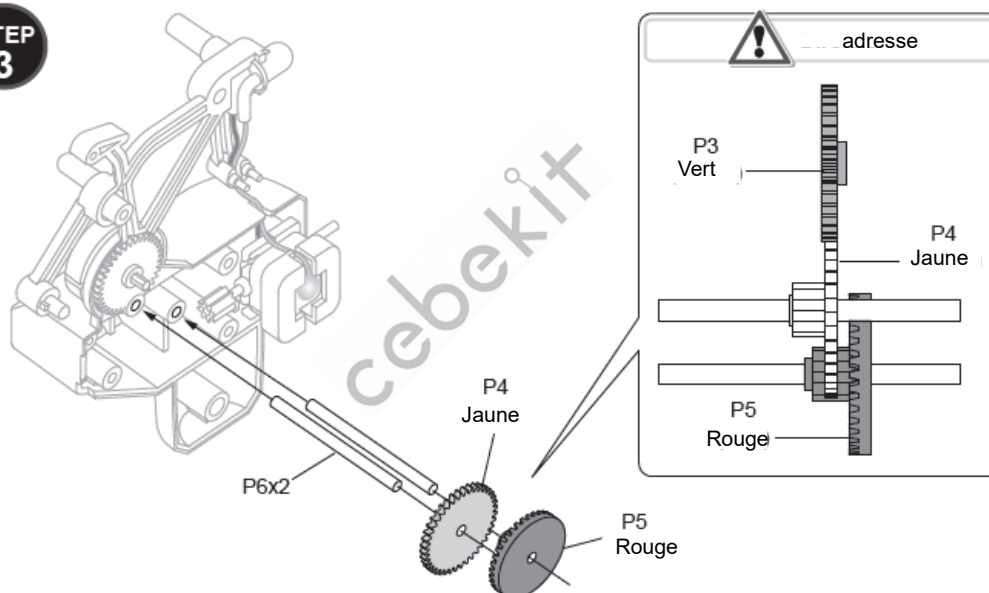
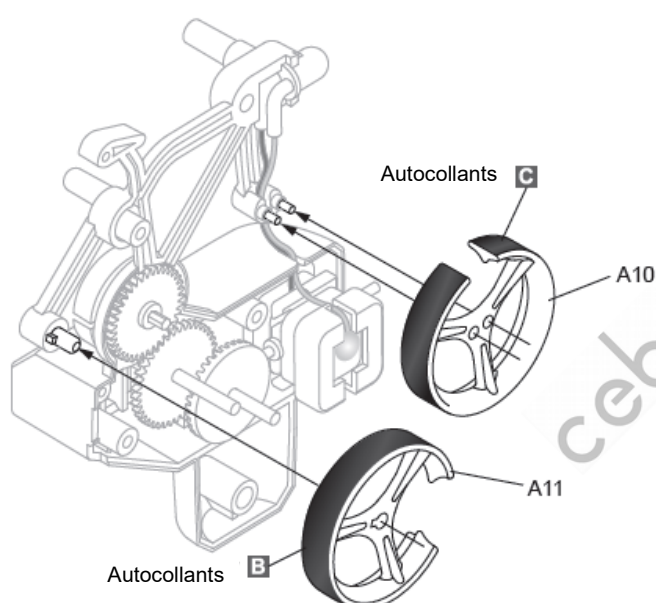
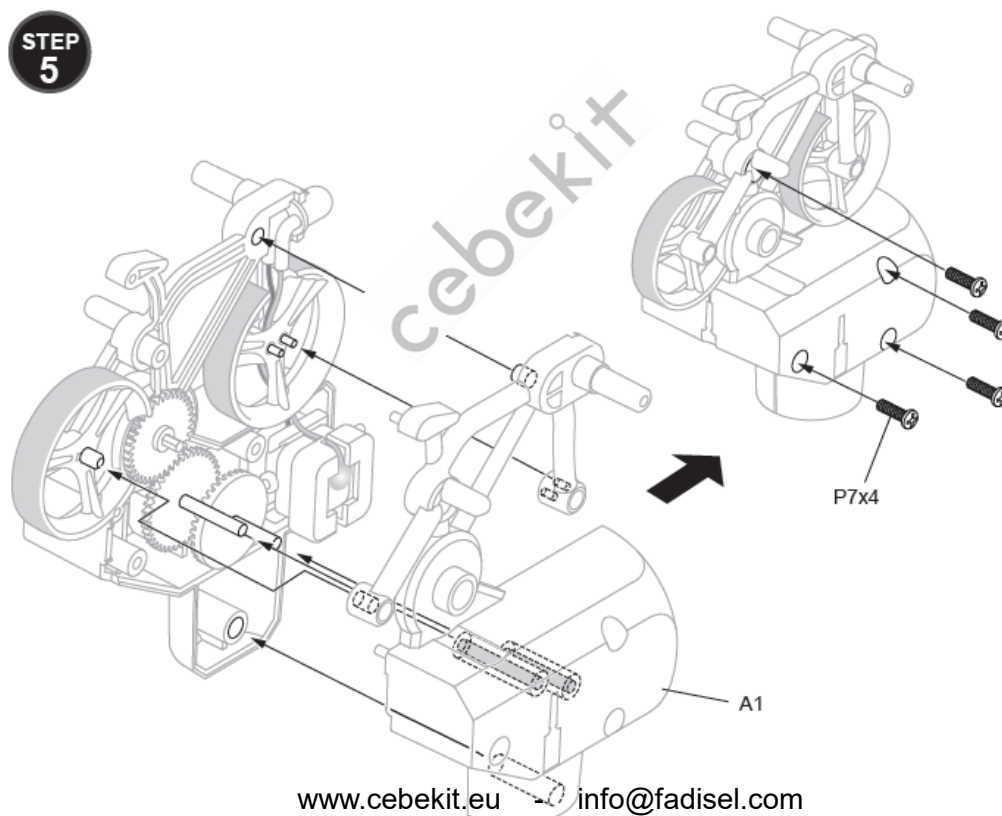
P10	Autocollants	QTY
		
		1

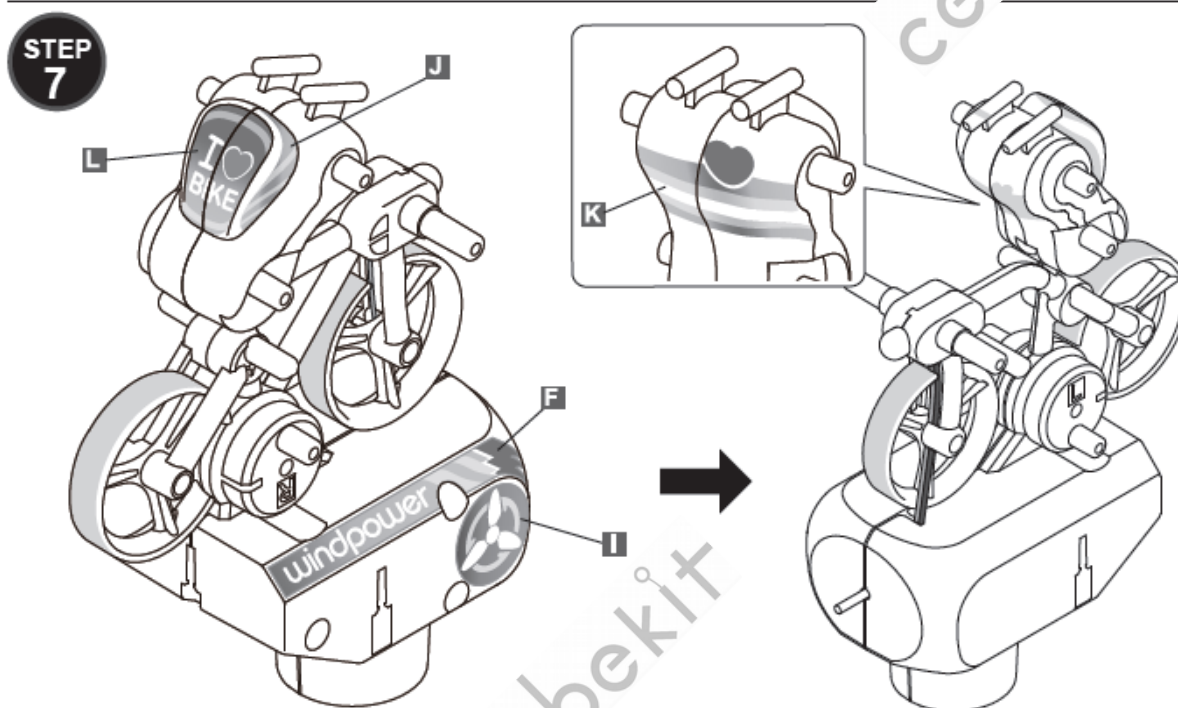
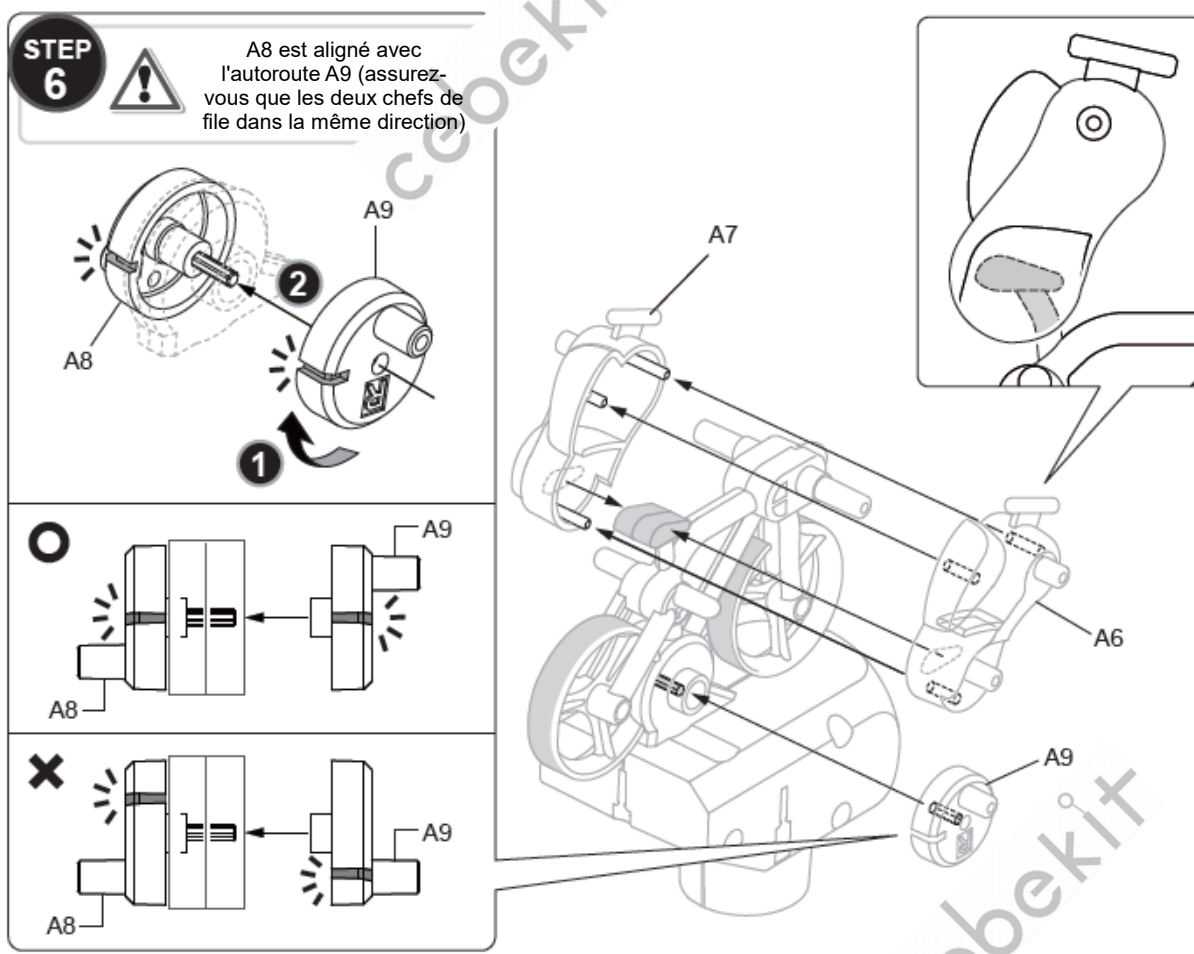
Les pièces en plastique

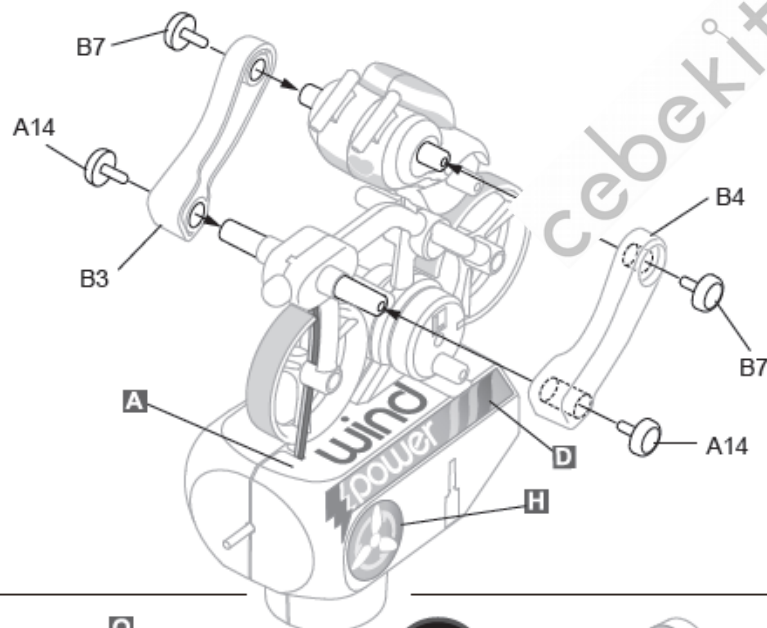
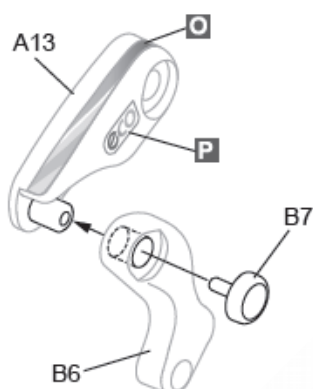
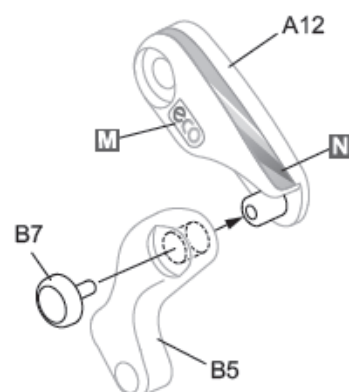
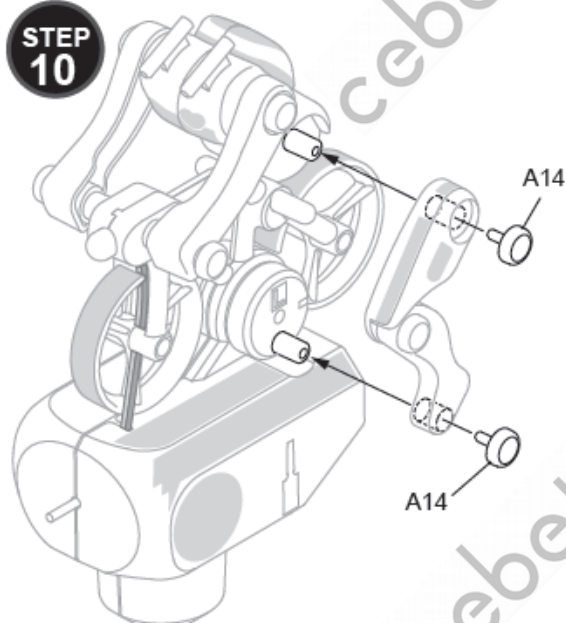
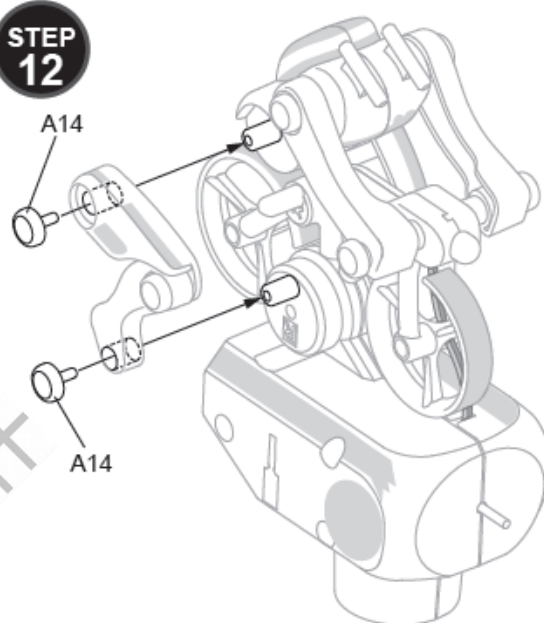


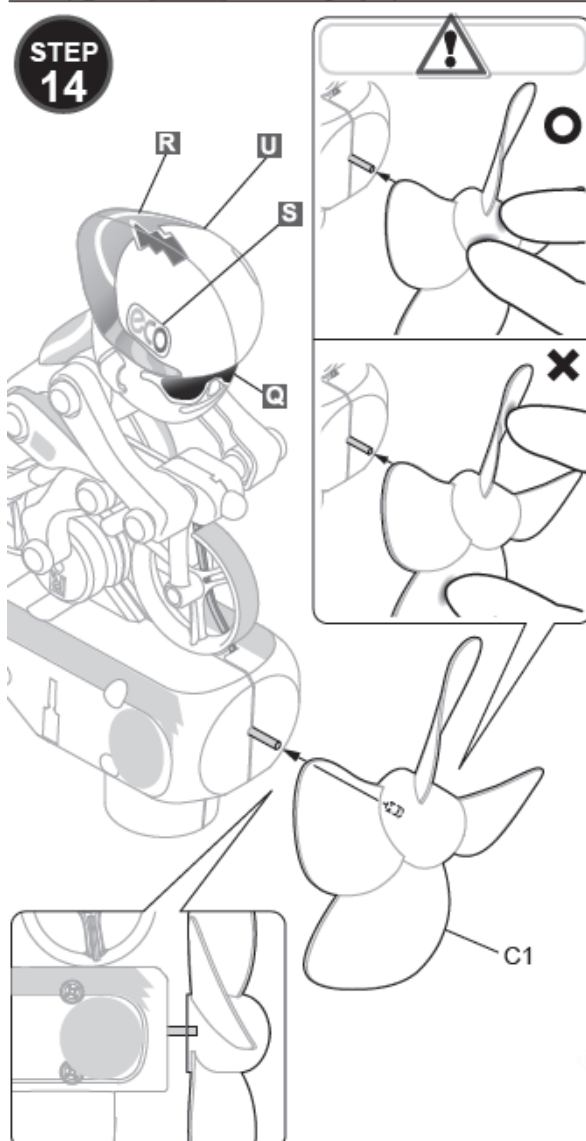
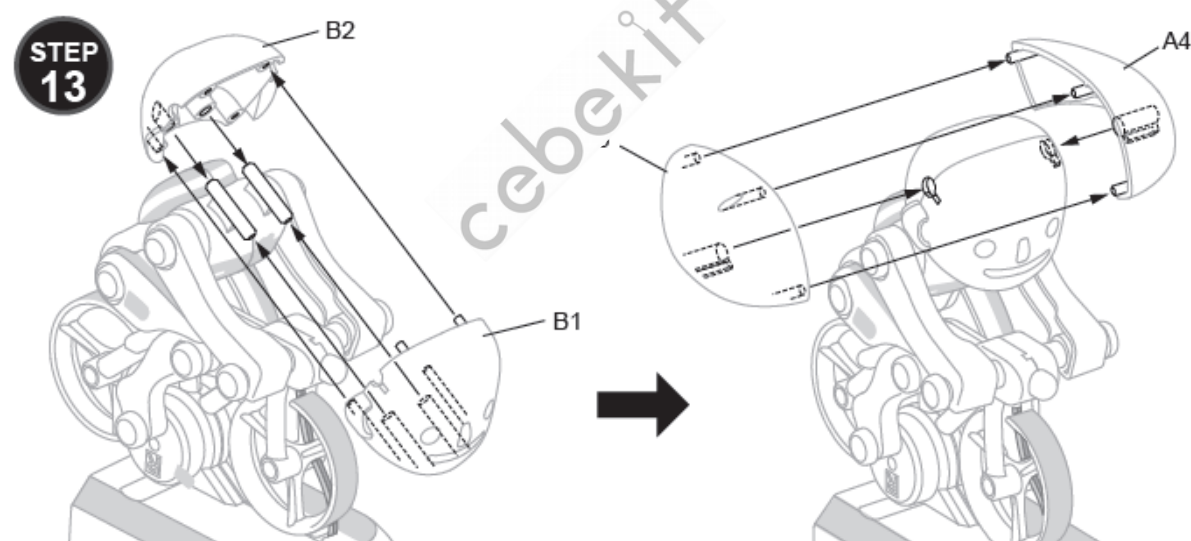
Assemblage mécanique



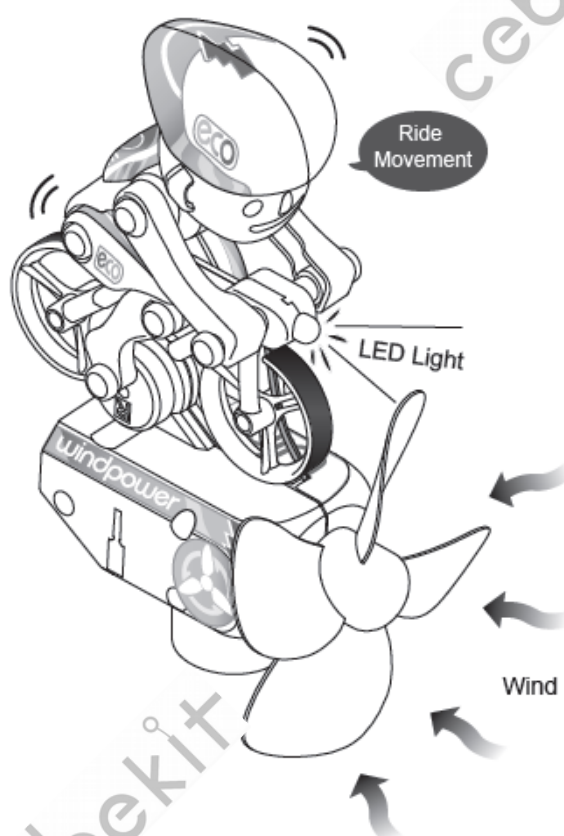
STEP
3STEP
4STEP
5



**STEP
8**

**STEP
9**

**STEP
11**

**STEP
10**

**STEP
12**




STEP 15 Fini Kit monté

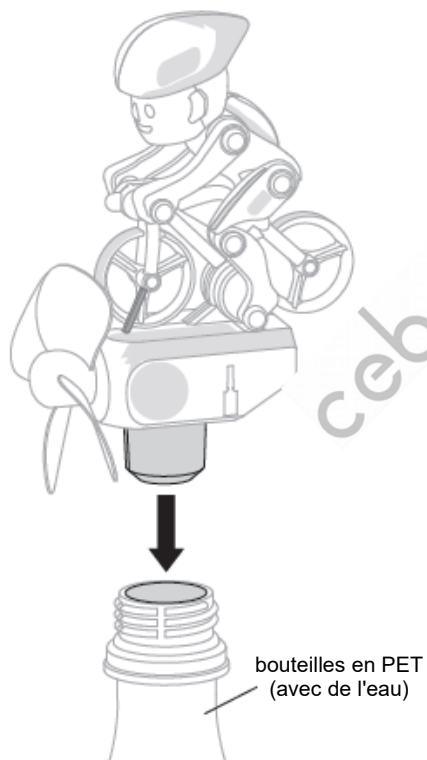


Vestiges de la turbine et de voir si le voyant clignote
et les pédales de motards en douceur.

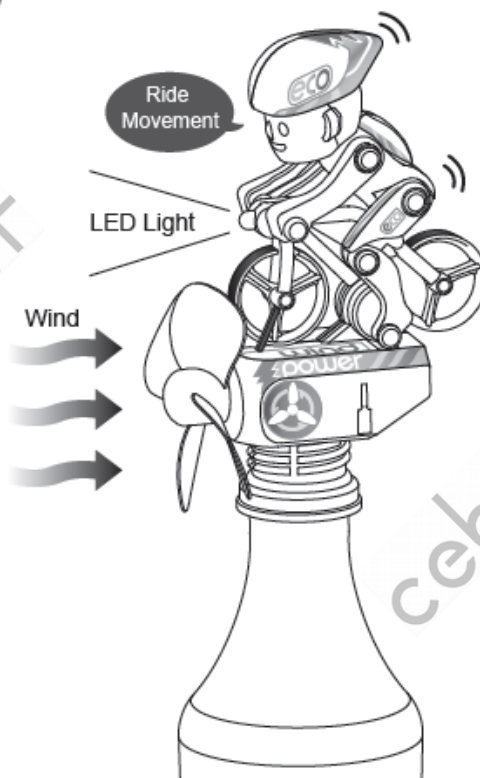
Comment ça marche

Funway 1: Placez la bouteille PET. (Nous vous recommandons de bouteilles en PET de colle.)

1-1



1-2 Kit monté

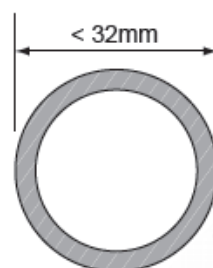
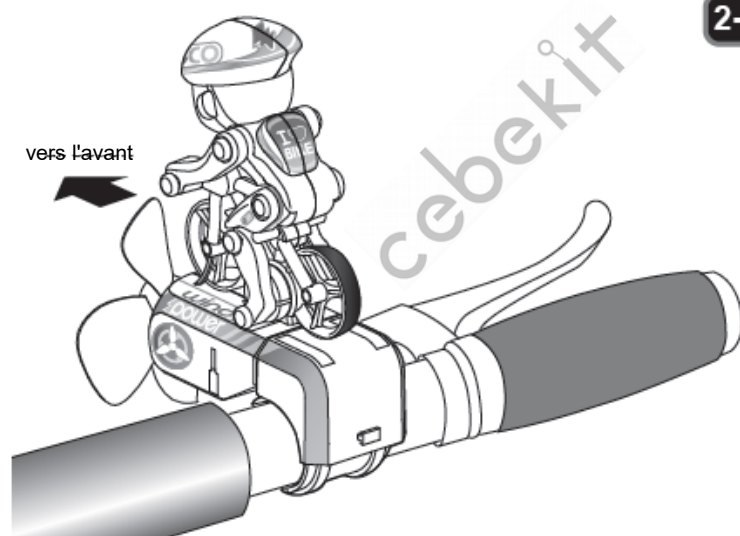


Funway 2: Faire du vélo guidon.

2-1

Note :

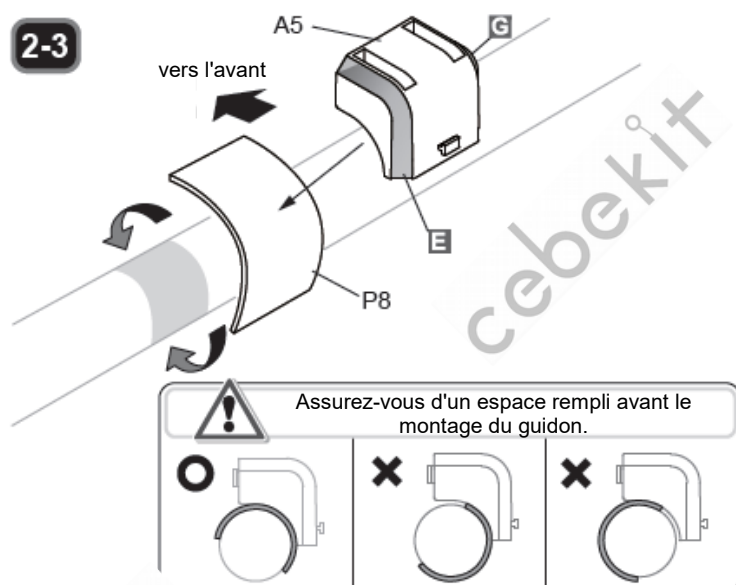
Diamètre du guidon à être faible. 32mm.



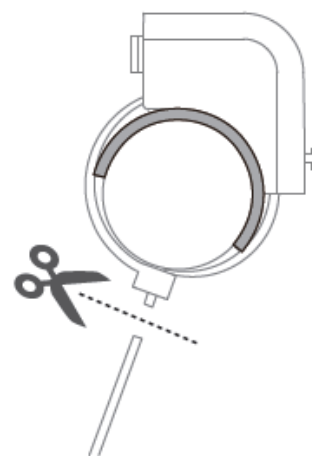
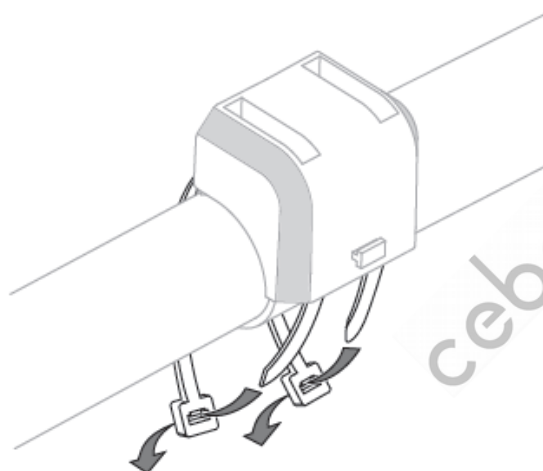
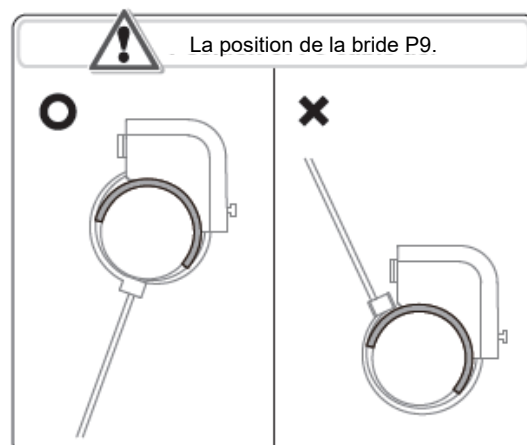
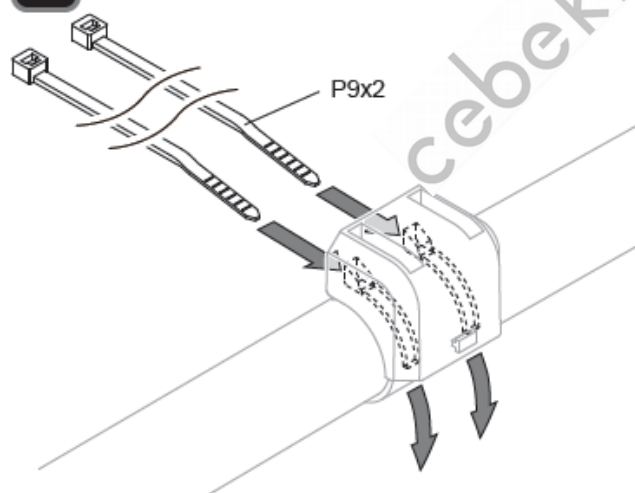
2-2



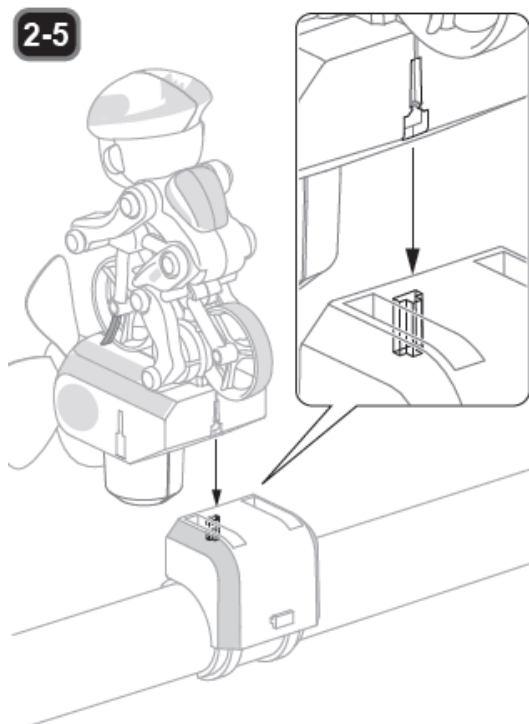
2-3



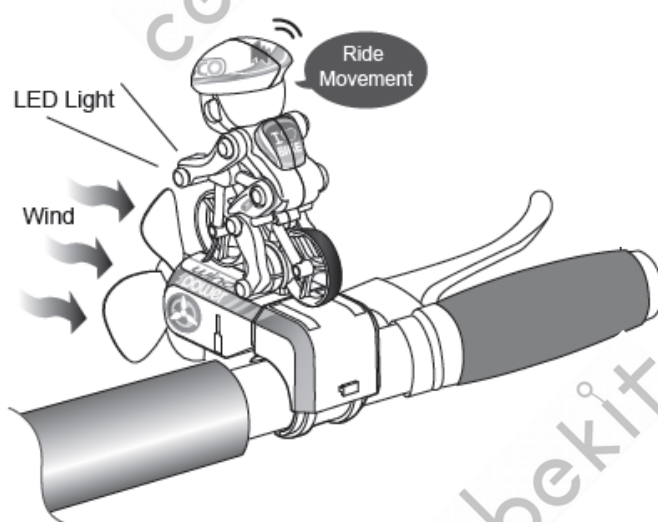
2-4



2-5



2-6 Kit monté

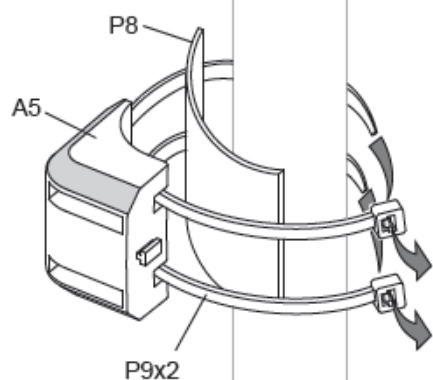
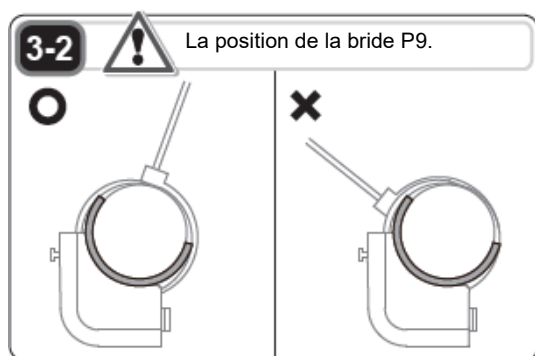
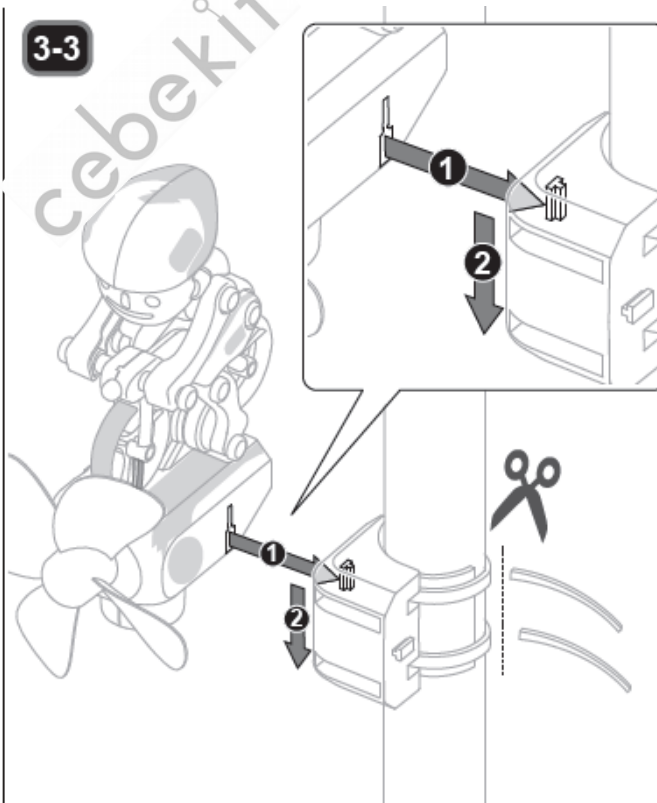
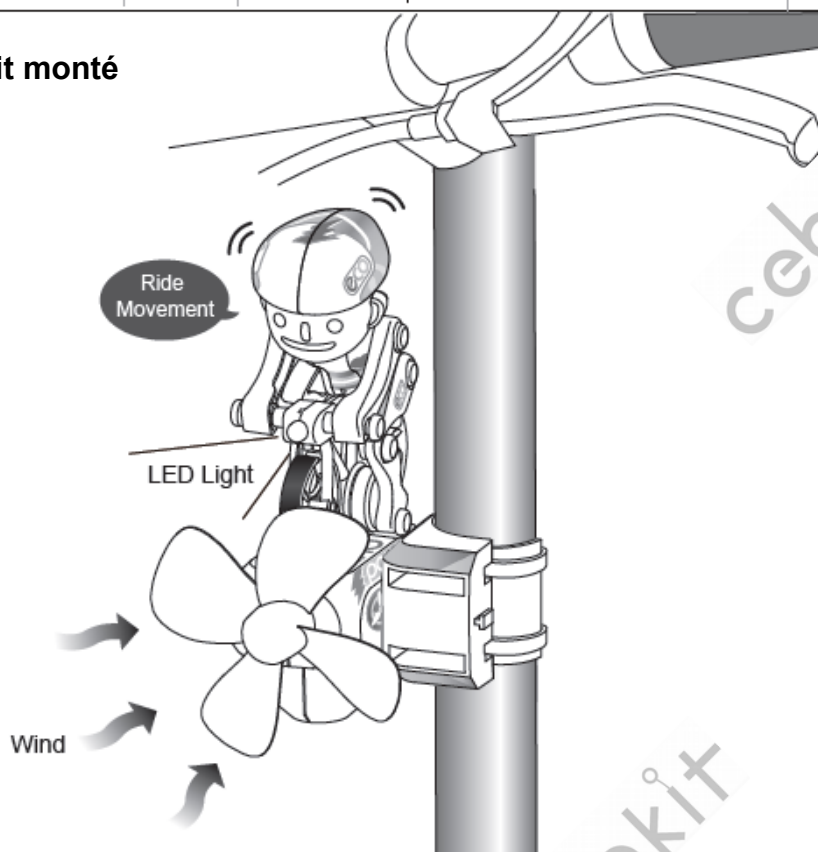


Funway 3: montage vertical sur un vélo ...



3-1 Veiller à ce que un espace plein dans la potence avant l'assemblage.



**3-3****3-4 Kit monté**

NOTE: Ce kit est recommandé pour les enfants de plus de 10 ans, toujours accompagnés par un adulte

